

# AIFSET 2022

## All India Forensic Science Entrance Test

### MODEL QUESTION PAPER

#### 1. Ecology Deals With The Study Of:

- A) Living Beings
- B) Living And Non Living Components
- C) Reciprocal Relationship Between Living And Non Living Components
- D) Environment

#### 2. Autoecology Deals With

- A) Ecology Of Species
- B) Ecology Of Many Species
- C) Ecology Of Community
- D) All The Above

#### 3. Synecology Deals With

- A) Ecology Of Many Species
- B) Ecology Of Many Populations
- C) Ecology Of Community
- D) None Of The Above

#### 4. Ecotype Is A Type Of Species In Which Environmentally Induced Variations Are

- A) Temporary
- B) Genetically Fixed
- C) Genetically Not Related
- D) None Of The Above

#### 5. The Term 'Biocoenosis' Was Proposed By

- A) Transley
- B) Carl Mobius
- C) Warming
- D) None Of The Above

#### 6. The Pyramid Of Energy In Any Ecosystem Is

- A) Always Upright
- B) May Be Upright Or Inverted
- C) Always Inverted
- D) None Of The Above

#### 7. Energy Flow In Ecosystem Is

- A) Unidirectional
- B) Bidirectional
- C) Multidirectional
- D) None Of The Above

#### 8. An Ecosystem Must Have Continuous External Source Of

- A) Minerals
- B) Energy
- C) Food
- D) All Of The Above

# AIFSET 2022

## All India Forensic Science Entrance Test

### MODEL QUESTION PAPER

**9. The source of energy in an ecosystem is**

- a) ATP
- b) Sunlight
- c) D.N.A
- d) R.N.A

**10. Trophic levels are formed by**

- a) Only plants
- b) only animals
- c) Only carnivorous
- d) Organisms linked in food chain

**11. Biotic potential is counteracted by**

- a) Competition with other organisms
- b) Producer is the largest
- c) Limitation of food supply
- d) None of the above

**12. Definition of ecosystem is**

- a) The community of organisms together with the environment in which they live
- b) The abiotic component of a habitat
- c) The part of the earth and its atmosphere which inhibits living organisms
- d) A community of organisms interacting with one another

**13. In a food chain of grassland ecosystem the top consumers are**

- a) Herbivorous
- b) Carnivorous
- c) Bacteria
- d) Either carnivorous or herbivorous

**14. MAB stands for**

- a) Man and biosphere
- b) Man, antibiotics and bacteria
- c) Man and biotic community
- d) Mayer, Anderson and Bisby

**15. Species that occur in different geographical regions separated by special barrier are:**

- a) Allopatric
- b) Sympatric
- c) Sibling
- d) None of the above

**16. The water readily available to plants for absorption by roots is**

- a) Gravitational water
- b) Capillary water
- c) Rain water
- d) Hygroscopic water

# AIFSET 2022

## All India Forensic Science Entrance Test

### MODEL QUESTION PAPER

**17. The water potential of pure water at atmospheric pressure is**

- a) -2.3 bar
- b) +2.3 bar
- c) Zero bar
- d) One bar

**18. Loss of water from the stomata of leaves are known as**

- a) Guttation
- b) Exudation
- c) Transpiration
- d) Evaporation

**19. During rainy season wooden doors are difficult to open or closure because of**

- a) Plasmolysis
- b) Imbibition
- c) Osmosis
- d) Diffusion

**20. Plasmolysis occurs due to**

- a) Absorption
- b) Osmosis
- c) Endoosmosis
- d) Exosmosis

**21. The marine animals that kept in fresh water burst. It shows the process of**

- a) Exosmosis
- b) Endoosmosis
- c) Plasmolysis
- d) Deplasmolysis

**22. Cooling of plants is caused by**

- a) Guttation
- b) Photorespiration
- c) Transpiration
- d) Assimilation

**23. Active uptake of minerals by roots mainly depends on the**

- a) Availability of oxygen
- b) Temperature
- c) Light
- d) Availability of CO<sub>2</sub>

**24. The hormone which signals the closure of stomata is**

- a) Auxins
- b) Cytokinin
- c) Gibberellin
- d) Abscissic acid

# AIFSET 2022

## All India Forensic Science Entrance Test

### MODEL QUESTION PAPER

**25. Water absorption takes place through**

- a) Lateral roots
- b) Root cap
- c) Root hairs
- d) Tap root

**26. Which of the following is an anti-transpirant**

- a) PMA
- b) PAN
- c) IAA
- d) AUG

**27. What is the action spectrum of transpiration?**

- a) Orange and red
- b) Green and ultraviolet
- c) Blue and red
- d) None of these

**28. Which one of the following is used for measuring the rate of transpiration?**

- a) Porometer
- b) Osmometer
- c) Moll's experiment
- d) Potometer

**29. Transpiration is least in**

- a) High atmospheric humidity
- b) good soil moisture
- c) high wind velocity
- d) dry environment

**30. Stomata open at night and close during day time in**

- a) Xerophytes
- b) Mesophytes
- c) Succulents
- d) Hydrophytes

**31. DNA replication occurs in**

- a) S phase
- b) G phase
- c) G2 phase
- d) M phase

**32. The pairing of homologous chromosomes**

- a) Tetrads
- b) Crossing over
- c) Synapsis
- d) Terminalisation

# AIFSET 2022

## All India Forensic Science Entrance Test

### MODEL QUESTION PAPER

**33. Which aspect of mitosis is affected by colchicine in inducing polyploidy?**

- a) DNA duplication
- b) Spindle formation
- c) Cell plate formation
- d) Chromosome doubling

**34. Pairing of homologous chromosomes can be seen during**

- a) Zygotene
- b) leptotene
- c) Diplotene
- d) Pachytene

**35. The cell cycle of a germinal cell has**

- a) two successive mitotic divisions
- b) two successive reduction divisions
- c) very short prophase in first division
- d) one reduction division followed by one mitotic division

**36. During cell division, sometimes there will be failure of separation of sister chromatids. This event is called**

- a) interference
- b) coincidence
- c) fusion
- d) Non disjunction

**37. In the cell cycle DNA synthesis takes place during**

- a) G1 phase
- b) G2 phase
- c) S phase
- d) Prophase

**38. During metaphase mitosis chromosomes**

- a) undergo coiling
- b) Move towards the poles
- c) Line up at the equator
- d) Break and disintegrate

**39. A cell divides every one minute. At this rate of division it can fill a 100 ml of beaker in one hour. How much time does it take to fill a 50 ml beaker?**

- a) 30 minutes
- b) 60 minutes
- c) 59 minutes
- d) one minute

# AIFSET 2022

## All India Forensic Science Entrance Test

### MODEL QUESTION PAPER

**40. In how many cells the meiotic division has taken place, if the total number of spermatids produced are 32?**

- a) 16
- b) 8
- c) 32
- d) 4

**41. Zygotic meiosis occurs in**

- a) Pteris
- b) Marchantia
- c) Puccinia
- d) Chalmydomonas

**42. Daughter cells are formed as a result of meiosis are not similar to that of parent cell because**

- a) Meiosis is completed in two stages.
- b) Prophase is longest phase.
- c) Nucleus size increases in daughter cells.
- d) Crossing over takes place and chromosome number is halved.

**43. During meiosis chiasmata are observed at**

- a) Pachytene
- b) Diplotene
- c) Leptotene
- d) Diakinesis

**44. Number of mitotic divisions required to produce 128 cells from a single cell is**

- a) 7
- b) 8
- c) 16
- d) 32

**45. During which stage of prophase I the crossing over takes place?**

- a) Pachytene
- b) Leptotene
- c) Zygotene
- d) Diplotene

**46. Mendel's findings were rediscovered by**

- a) De vries
- b) Correns
- c) tschermak
- d) all of the above

**47. The physical expression or appearance of a character is called as**

- a) morphology
- b) geneotype
- c) phenotype
- d) ecotype



# AIFSET 2022

## All India Forensic Science Entrance Test

### MODEL QUESTION PAPER

**48. Genotype is the**

- a) genetic constitution
- b) genetic constitution of the phenotype
- c) trait expressed
- d) expressed genes

**49. The alternate forms of a gene is called**

- a) recessive character
- b) dominant character
- c) alleles
- d) alternative gene

**50. If the genotype consists of only one type of allele. It is called**

- a) homozygous
- b) hetereozygous
- c) momoallelic
- d) uniallelic

**51. How to increase the energy stored in an inductor by four times?**

- a) By doubling the current
- b) This is not possible
- c) By doubling the inductance
- d) By making current  $2-\sqrt{}$  times

**52. Consider an inductor whose linear dimensions are tripled and the total number of turns per unit length is kept constant, what happens to the self-inductance?**

- a) 9 times
- b) 3 times
- c) 27 times
- d) 13 times

**53. Lenz law is based on which of the following conservation**

- a) Charge
- b) Mass
- c) Momentum
- d) Energy

**54. What will be the acceleration of the falling bar magnet which passes through the ring such that the ring is held horizontally and the bar magnet is dropped along the axis of the ring?**

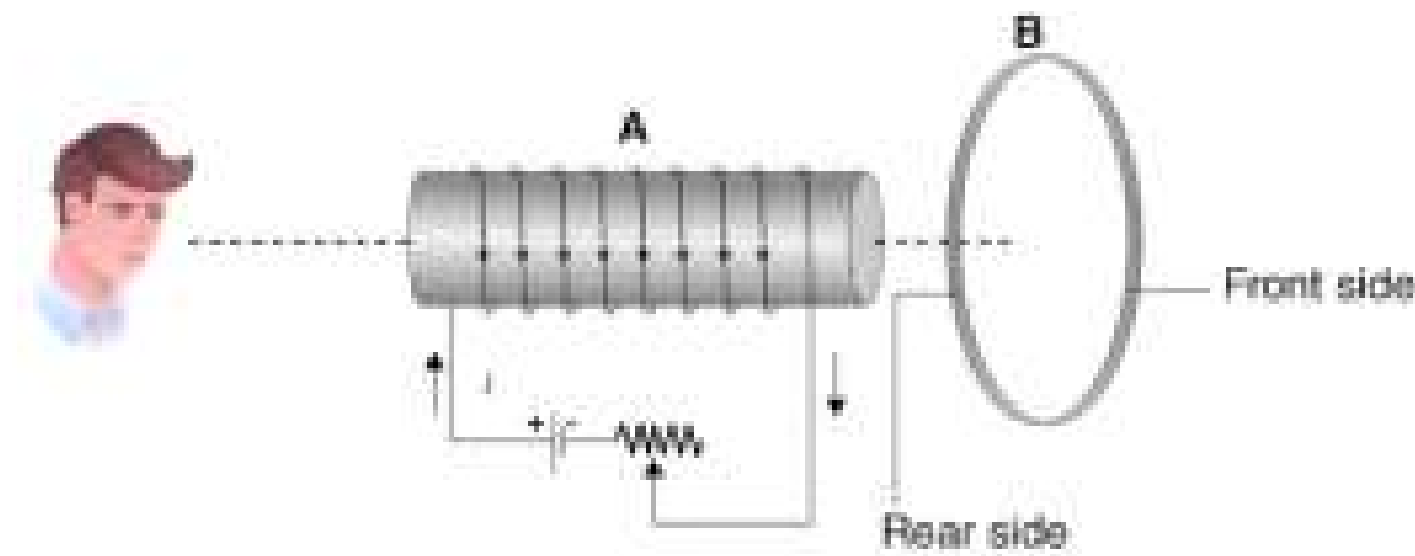
- a) It depends on the diameter of the ring and the length of the magnet
- b) It is equal due to gravity
- c) It is less than due to gravity
- d) It is more than due to gravity

# AIFSET 2022

## All India Forensic Science Entrance Test

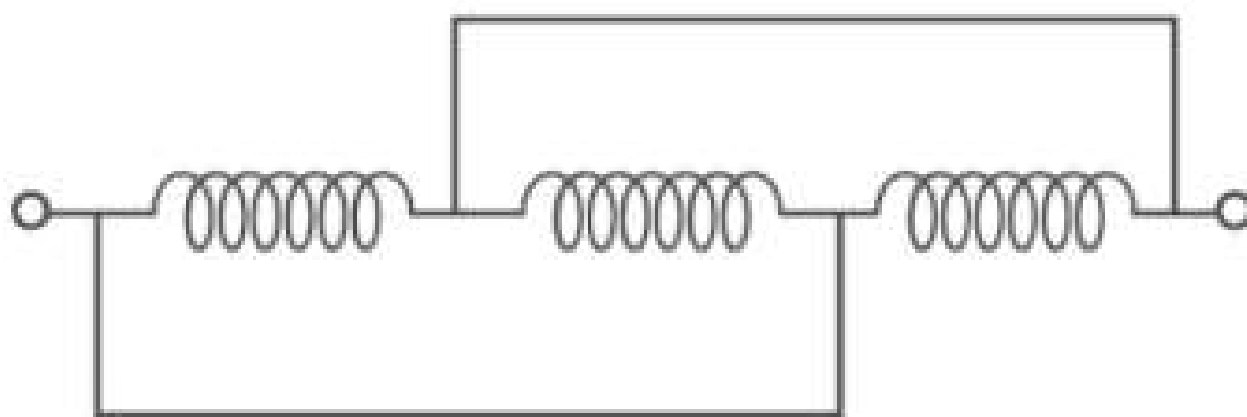
### MODEL QUESTION PAPER

55. An observer is seeing the setup of an aluminium ring B facing an electromagnet A. The current  $I$  through A can be altered if



- a) B is independent of an increase or decrease of  $I$
- b) If  $I$  increases, A will attract B
- c) If  $I$  increase, A will repel B
- d) If  $I$  decrease, A will repel B

56. What is the equivalent inductance of the following circuit if the pure inductance is  $3.0\text{H}$



- a)  $9\text{H}$
- b)  $3\text{H}$
- c)  $1\text{H}$
- d)  $2\text{H}$

57. What is the need for laminating the core of a transformer?

- a) To reduce the resistance in the winding
- b) To reduce the eddy currents
- c) To reduce the hysteresis
- d) None of the above

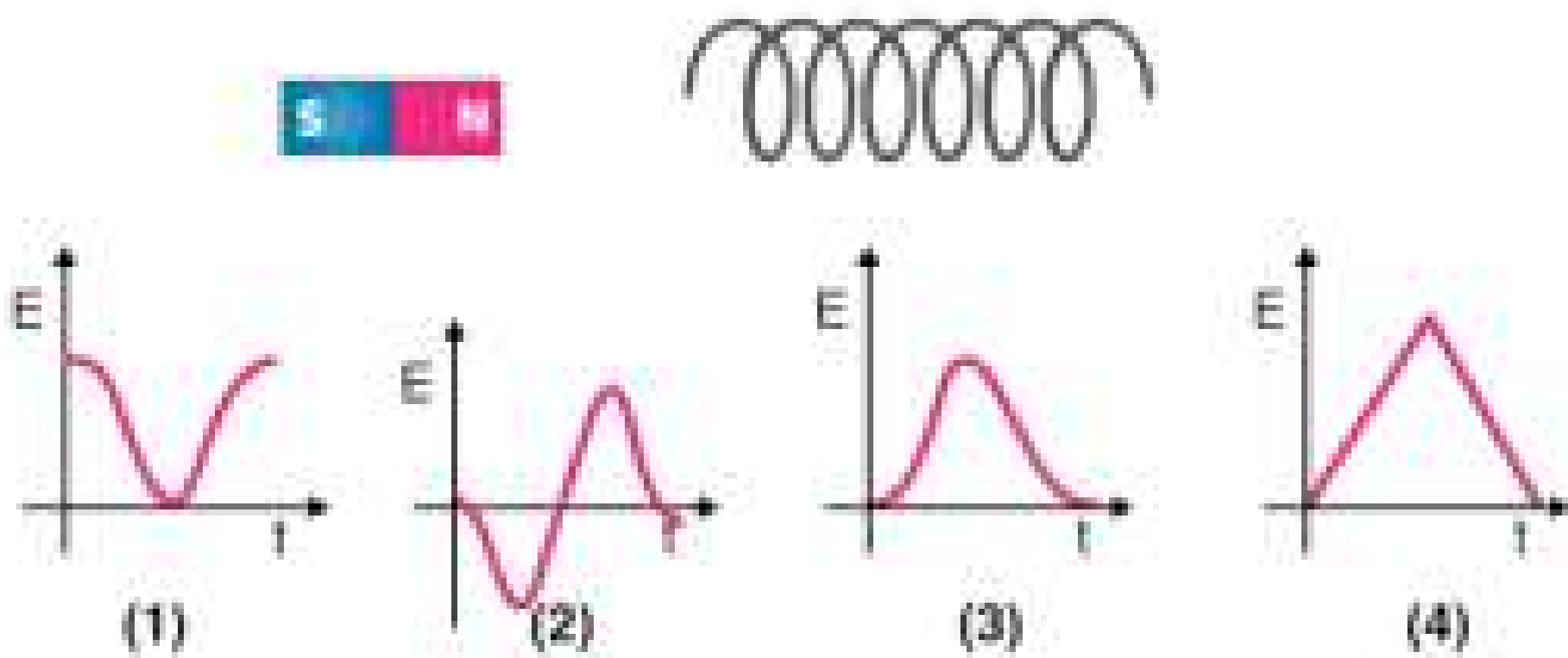


# AIFSET 2022

## All India Forensic Science Entrance Test

### MODEL QUESTION PAPER

58. Which of the following represent the variation of induced EMF with respect to time  $t$  if a short bar magnet is moved along its axis and has a constant velocity.



59. A wire loop is rotated in a magnetic field such that the frequency of change of direction of the induced emf is

- Six times per revolution
- Four times per revolution
- Twice per revolution
- Once per revolution

60. Which of the following is the equivalent quantity of mass in electricity?

- Current
- Charge
- Potential
- Inductance

61. What is the unit of inductance?

- Volt/ampere
- Joule/ampere
- Volt-ampere/sec
- Volt-sec/ampere

62. What is the angle made by the plane of eddy currents with the plane of magnetic lines of force?

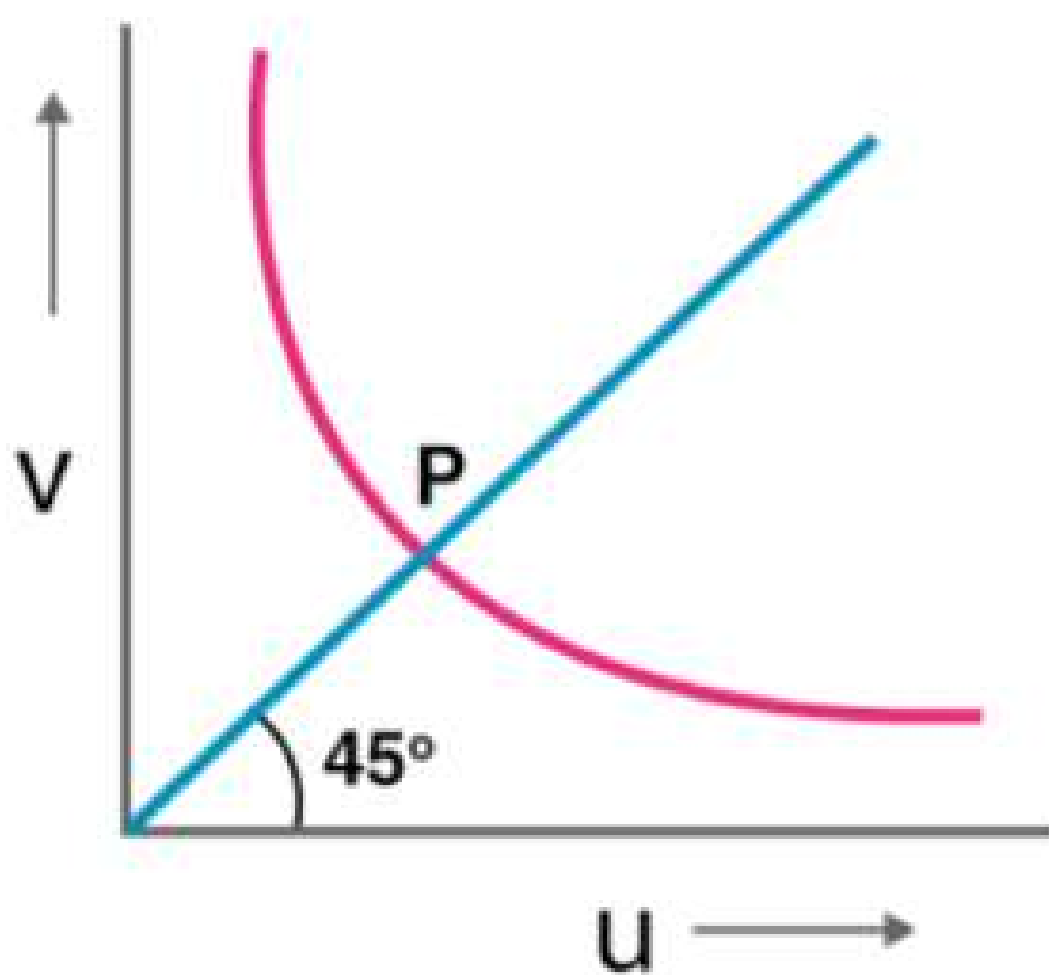
- $0^\circ$
- $40^\circ$
- $90^\circ$
- $180^\circ$

# AIFSET 2022

## All India Forensic Science Entrance Test

### MODEL QUESTION PAPER

63. Following is the graph explaining the variation of  $v$  with respect to  $u$  for a mirror. What is the value of points above the marking P on the curve for values of  $v$



- a) Smaller than  $f$
- b) Larger than  $2f$
- c) Smaller than  $2f$
- d) Smaller than  $2$

64. What is the magnification produced by the plane mirror?

- a) Zero
- b)  $+1$
- c)  $-1$
- d) Between  $0$  and  $+\infty$

65. The image formed by the convex mirror is  $1/n$  times the object and has a focal length  $f$ . What is the distance of object from the mirror?

- a)  $(n + 1)f$
- b)  $(n - 1)f$
- c)  $(n+1n)f$
- d)  $(n-1n)f$

66. The metal does not give  $H_2$  on treatment with dilute HCL is

- a) Zn
- b) Fe
- c) Ag
- d) Ca

67. The molecule which has the highest percentage of ionic character among the following is

- a) HI
- b) HF
- c) HCl
- d) HBr

# AIFSET 2022

## All India Forensic Science Entrance Test

### MODEL QUESTION PAPER

**68. The main chemical constituent of the oil of cardamom which is responsible for flavour of this oil is**

- a) cineole
- b) engenol
- c) geraniol
- d) limonene

**69. Zone refining is used for the purification of**

- a) Au
- b) Ge
- c) Ag
- d) Cu

**70. The gas used for artificial ripening of green fruit is**

- a) Ethylene
- b) Ethane
- c) carbon dioxide
- d) acetylene

**71. The following are the half lives of four active isotopes. Which one of the following is the most dangerous to handle?**

- a) 3 billion years
- b) 100 years
- c) 0.01 minute
- d) 13 days

**72. The method that cannot be used for removing permanent hardness of water is**

- a) adding sodium carbonate
- b) Distillation
- c) adding caustic soda
- d) boiling

**73. The mineral containing both magnesium and calcium is**

- a) magnesite
- b) Calcite
- c) Carnallite
- d) dolomite

**74. The main chemical constituent of clay is**

- a) silicon oxide
- b) aluminium borosilicate
- c) zeolites
- d) aluminium silicate

# AIFSET 2022

## All India Forensic Science Entrance Test

### MODEL QUESTION PAPER

**75. The major constituent of air is**

- a) nitrogen
- b) carbon dioxide
- c) oxygen
- d) hydrogen

**76. The ionisation energy of hydrogen atom in the ground state is  $x$  KJ. The energy required for an electron to jump from 2nd orbit to 3rd orbit is**

- a)  $5x/36$
- b)  $5x$
- c)  $7.2x$
- d)  $x/6$

**77. The iron ore magnetite consists of**

- a)  $\text{Fe}_2\text{O}_3$
- b)  $\text{Fe}_3\text{O}_4$
- c)  $\text{FeCO}_3$
- d)  $3\text{Fe}_2\text{O}_3 \cdot 3\text{H}_2\text{O}$

**78. The high reactivity of fluorine is due to**

- a) its high electro negativity
- b) small size of fluorine atom
- c) availability of d-orbitals
- d) strong F – F bond

**79. The inexpensive and commonly used variety of glass is called soda glass. It is called so because**

- a) was used initially for making bottles of soda (carbonated drink)
- b) is made using soda (sodium carbonate)
- c) was initially used for storing sodium carbonate
- d) is made using soda lime

**80. The mass number of a nucleus is**

- a) always less than its atomic number
- b) the sum of the number of protons and neutrons present in the nucleus
- c) always more than the atomic weight
- d) a fraction

**81. It refers to a body of knowledge regarding crime as a social phenomenon.**

- a) Penology
- b) Criminology
- c) Sociology
- d) Psychology

# AIFSET 2022

## All India Forensic Science Entrance Test

### MODEL QUESTION PAPER

**82. The study of criminology involves the study of many disciplines in the collection of knowledge about criminal actions, thereby it is:**

- A. Scientific
- B. Multidisciplinary
- C. Psychiatric
- D. Economics

**83. In its legal definition, a Criminal is :**

- A. A person who committed a crime and convicted by a court of the violation of a criminal law.
- B. A person who violated a social norm or one who have an antisocial act.
- C. A person who violated the rules of conduct due to behavioral maladjustments.
- D. All of the above.

**84. REBELLION is an example of a crime.**

- A. Against public order.
- B. Against public interest
- C. Against public morals
- D. Committed by public officers.

**85. Kidnapping is an example of crime.**

- A. Against personal liberty and security.
- B. Against Honor
- C. Against person
- D. Against chastity

**86. A term denoting various offences committed by children or youths under the age of 18**

- A. Juvenile crime.
- B. Youthful offender
- C. Status offender
- D. All of them.

**87. A term used to describe a large number of disapproved behaviors of children or youths.**

- A. Criminal act.
- B. Mala in se.
- C. Mala prohibita
- D. Juvenile delinquency.

**88. One who repeatedly commits an act that is against the norms or more observed by the society.**

- A. Delinquent.
- B. Delinquency.
- C. Offender.
- D. None of the above.

# AIFSET 2022

## All India Forensic Science Entrance Test

### MODEL QUESTION PAPER

**89. One of the most powerful and prime mover of the criminal justice system and an institution in the community with the broad goals of maintaining peace and order, the protection of life and property and the enforcement of laws.**

- A. Police
- B. Barangay tanod
- C. Security guard
- D. Fireman.

**90. It is the study of victims and their contributory role,if any, in crime causation.**

- A. Victimology
- B. Epidemiology
- C. Demography
- D. Demonology

**91. The first man to introduce Fingerprint testing in Criminal investigation is**

- a) William Herschel
- b) Francis Galton and Edward Henry
- c) Thomas Edison
- d) William James

**92. Who told genetic code could be used to identify individuals**

- a) Dr. Henry
- b) Charles Darwin
- c) Alec Jeffrey
- d) Alphonse Bertillon

**93. What is a scientific data called when used in a courtroom setting to establish the connection of a person from a crime**

- a) Evidence
- b) Testimony
- c) Hearsay
- d) Showcase

**94. What do blunt objects produce**

- a) Incisions
- b) Lacerations
- c) Pain
- d) Scar

**95. How many Central Forensic Laboratories are in India**

- a) 4
- b) 5
- c) 7
- d) 9



# AIFSET 2022

## All India Forensic Science Entrance Test

### MODEL QUESTION PAPER

**96. The number of 'permanent teeth found in a typical human mouth**

- a) 26
- b) 32
- c) 36
- d) 42

**97. A virus can be transmitted from dried blood**

- a) True
- b) False
- c) Not specified
- d) None

**98. Full form for ELISA**

- a) Enzyme linked immunity association
- b) Easily linked immunity assay
- c) Erase line immunosorbent assay
- d) Enzyme linked immunosorbent assay

**99. A gross examination is one that:**

- a) Internal examination
- b) Internal and external examination
- c) Autopsy
- d) Deals only with what is visible to the unaided eye

**100. Hair cuttings contain:**

- a) Contain mitochondrial DNA
- b) Contains Fibers
- c) Contain blood samples
- d) Need to calm down

# AIFSET 2022

All India Forensic Science Entrance Test

## ANSWER KEY

1. C	26. A	51. A	76. A
2. A	27. C	52. B	77. A
3. C	28. D	53. D	78. A
4. B	29. A	54. C	79. B
5. B	30. C	55. C	80. B
6. A	31. A	56. C	81. B
7. A	32. C	57. B	82. B
8. B	33. B	58. B	83. D
9. B	34. A	59. C	84. A
10. D	35. D	60. D	85. C
11. D	36. D	61. D	86. A
12. A	37. C	62. C	87. D
13. B	38. C	63. B	88. C
14. A	39. C	64. B	89. A
15. A	40. B	65. B	90. A
16. B	41. D	66. C	91. B
17. C	42. D	67. B	92. C
18. C	43. A	68. A	93. A
19. B	44. A	69. B	94. B
20. D	45. A	70. A	95. C
21. B	46. D	71. C	96. B
22. C	47. C	72. D	97. A
23. A	48. B	73. D	98. D
24. D	49. C	74. D	99. D
25. C	50. A	75. A	100. A